

# Certikin



DOSING EQUIPMENT CATALOGUE

## **Certikin's Quality Statement**

It is the policy of Certikin to provide products and services which give total customer satisfaction.

The aims and objectives of the company are:

- To place safety and quality first in everything
- To fully understand our suppliers and customers' needs and expectations and to supply precisely the products and services agreed.
- To involve all staff, utilising their skills and abilities to the full, in support of our quality policy.
- To set ourselves a target of annual improvement, based on the simple but fundamental principle of 'do it right first time'.

Neil Murray, Managing Director

# Dosing pumps

## CDE-FCO - Manual pump with stroke speed adjustment



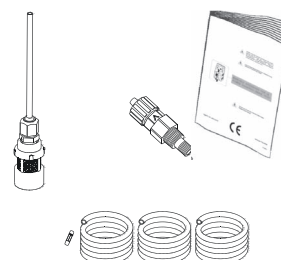
### ALSO AVAILABLE

CDE-FCOS

Pump with manual stroke frequency adjustment suitable for essence dosing.  
Pump constructed to reduce sound output.

Pressure <i>bar</i>	Flow <i>l/h</i>
5	5
3	6,5

### ACCESSORY KITS



n. 1	Fuse
n. 1	Foot filter with valve
n. 1	Injection valve
m. 2	Delivery pipe
m. 2	Suction pipe
m. 2	Discharge pipe
n. 1	Installation manual

**ACCESSORY KITS are included with ALL chemical dosing pumps.**

# Dosing pumps

## CDE-VCL - Manual pump with stroke speed adjustment and level control



Pressure <i>bar</i>	Flow <i>l/h</i>
5	1
10	4
3	10
2	17

Available with autodegassing  
(self venting) pump heads

Pressure <i>bar</i>	Flow <i>l/h</i>
7	4
2	13
1	13,5

## ALSO AVAILABLE

### CDE-VCLG

Metering pump for flocculant with double measurement scale (24h) with level probe.

From 0 to 300 gr/day  
From 0 to 3000 gr/day

### CDE-VMS EN

Metering pump for algicide with - weekly timer, microprocessor digital controls, LCD display and level probe.

### CDE-VMS PH

Proportional pump driven by internal built-in pH meter (0÷14pH) and level control, supplied without pH probe.

### CDE-VMS RH

Proportional pump driven by internal built-in ORP (ORP) meter (0÷1000mV) and level control, supplied without ORP probe.

## CDE-KCL - Manual pump with stroke length and stroke speed adjustment with level control



Pressure <i>bar</i>	Flow <i>l/h</i>
2	18
5	10
20	01

Available with autodegassing  
(self venting) pump heads

Pressure <i>bar</i>	Flow <i>l/h</i>
2	13
5	7,5
20	0,5

## ALSO AVAILABLE

### CDE-KIS

Proportional pump driven by external digital signal, with level control: to each external pulse corresponds one pump injection.

### CDE-KIC

Proportional pump driven by current signal (0-4mA=0pulses; 20mA=max pulses) and level control.

### CDE-KMS PH

Proportional pump driven by internal built-in pH meter (0÷14pH) and level control, supplied without pH probe.

### CDE-KMS RH

Proportional pump driven by internal built-in ORP (ORP) meter (0÷1000mV) and level control, supplied without ORP probe.



# Dosing pumps

## MULTI CHEMICAL MEASUREMENT AND CONTROL

### CDE-WDPHCL CDE-WDPHRH



### pH & Chlorine pH & Redox (ORP)

Swimming pool controller with 2 metering pumps.

Ranges: 0-14 pH and 0-10 mg/l  $\text{Cl}_2$ . Chlorine probe to specify at order. Controller settings by wheel. LCD backlight display.

Ranges: 0-14 pH and 0-1000 mV. Controller settings by wheel. LCD backlight display.

Alarm output, max dosing time alarm, probe check-up, pH priority dosing. Liquid ends in PVDF.

Pressure  
bar

5  
3

Flow  
l/h

1  
10

### CDE-WDPHRHS CDE-WDPHCLS CDE-WDPHBRS



### pH / Redox (ORP)

Swimming pool controller with one metering pump for acid (pH) and one 230VAC output driven by Redox (ORP) for salt generator or dry feeder.

### pH / Cl

Swimming pool controller with one metering pump for acid (pH) and one 230VAC output driven by Chlorine for salt generator or dry feeder.

### pH / Br

Swimming pool controller with one metering pump for acid (pH) and one 230VAC output driven by bromine for dry feeder (brominator). Liquid ends in PVDF.

### Section pH / Redox

Pressure  
bar

5  
3

Flow  
l/h

1  
10

Solenoid Valve  
VAC

230

Consumption

A  
10

### CDE-WPHRHC



### pH Redox (ORP) with calculated Chlorine (ppm) display

Swimming pool controller with 2 metering pumps.

Ranges: 0-14 pH and 0-1000 mV. Adjustment using keypad. LCD backlight display.

Alarm output, max dosing time alarm, probe check-up, pH priority dosing. Liquid ends in PVDF.

Pressure  
bar

5  
3

Flow  
l/h

1  
10

Probes specified at point of order.

# Multi parameter controllers

## 5-CHANNEL



### CDE-MAX5

**(pH / Total chlorine / Free chlorine / Combined chlorine / Redox / °C / Turbidity / Conductivity )**

MAX5 is a multiple digital controller system. It reads and controls up to 5 channels that can be programmed to control pH - ORP - Chlorine - Turbidity - Temperature - Total Chlorine.

pH: from 0 to 14 pH  
ORP (Redox): from 0 to 1000 mV  
Total Chlorine: from 0 to 10 mg/l  
Free Chlorine: from 0 to 10 mg/l  
Combined Chlorine: from 0 to 10 mg/l  
Turbidity: from 0 to 30 NTU  
Temperature: from 0 to 100 °C  
Conductivity: from 0 to 300 mS

## 2-CHANNEL



### CDE-LDPHxx Series Digital Controllers

Digital controller with microprocessor and LCD backlight display. Using a revolutionary wheel the controller can be easily programmed.

3 proportional setpoints and 2 proportional On/Off or timed (PWM) setpoints. Stand-by input and max dosing time alarm. CHLORINE / BROMINE selector. Alarm for probe failure. General alarm output.

**CDE-LDPHRH** pH (0÷14) - ORP (0÷1000mV) - °C (0÷99,9)

**CDE-LDPHCL\*** pH (0÷14) - Chlorine (0÷10 mg/l Cl<sub>2</sub>)\* - °C (0÷99,9)

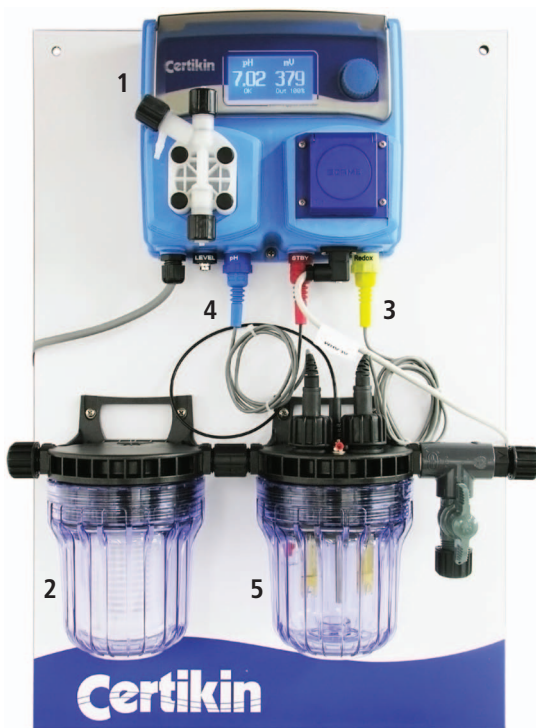
**CDE-LDPHO2** pH (0÷14) - O<sub>2</sub> (0÷200 mg/l H<sub>2</sub>O<sub>2</sub>) - °C (0÷99,9)

**CDE-LDPRC** pH (0÷14) - Chlorine (0÷10 mg/l Cl<sub>2</sub>) - °C (0÷99,9) and ORP only reading (0÷1000mV)

# Board mounted equipment

FOR DOMESTIC & COMMERCIAL FEEDER APPLICATIONS

## CDE-PA- WDPHEV

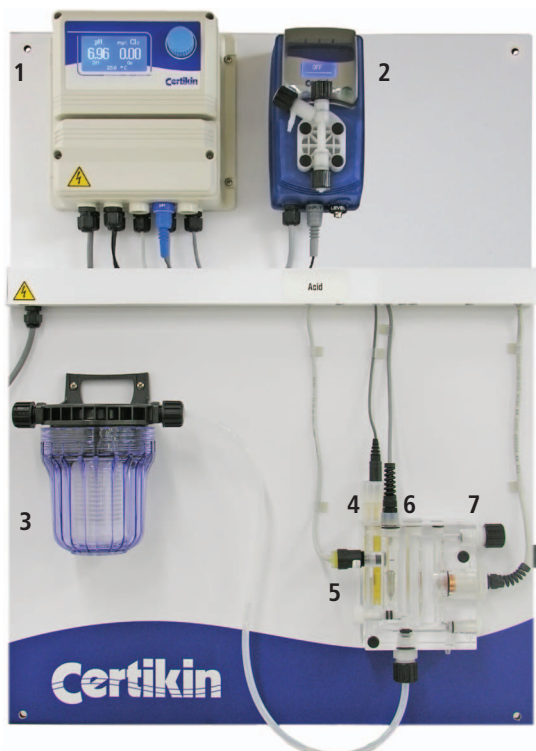


**For pH and ORP control.  
Salt chlorine generator or dry  
feeder (brominator) output.**

1. Controller WDPHRHS
2. NFIL Filter
3. Probe Redox ERHS
4. Probe pH EPHS
5. Probe Holder NPED4

Dimensions: 400x600 mm

## CDE-PA- LDPHCLV



**pH correction & free chlorine/  
bromine proportional control of  
a dry feeder (Chlorine/Bromine)  
output**

1. Controller
2. Dosing Pump
3. NFIL Filter
4. Probe pH EPHS
5. Proximity switch SEPR
6. Temperature probe ETEPT
7. Chlorine probe either:  
> ECL6 (as pictured) or  
> ECL3S/10

See page 13 for more information on chlorine probes.

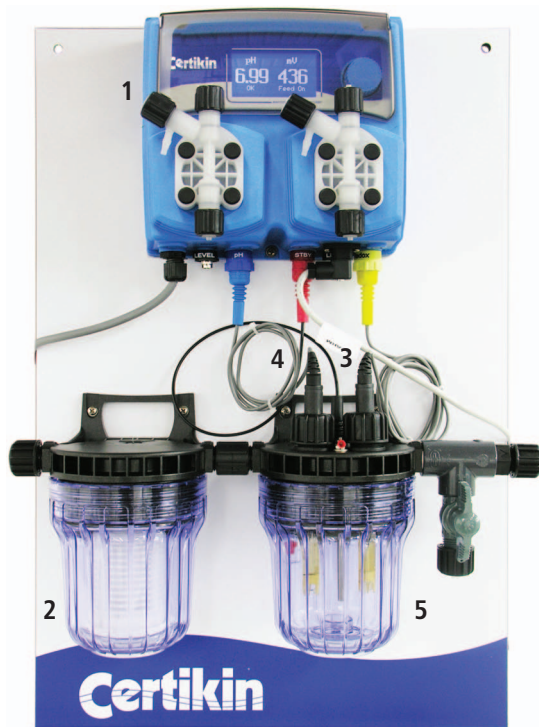
Dimensions: 600x800 mm



# Board mounted equipment

FOR DOMESTIC & LIGHT COMMERCIAL APPLICATIONS

## CDE-PA- WDPHRH

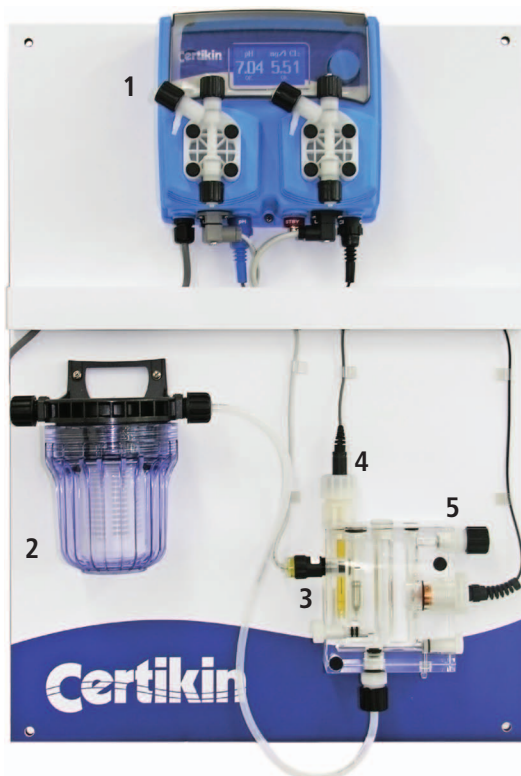


### For pH and Redox control.

1. Controller WDPHRH
2. NFIL Filter
3. Probe Redox ERHS
4. Probe pH EPHS
5. Probe Holder NPED4

Dimensions: 400x600 mm

## CDE-PA- WDPHCL



### For pH and Chlorine control

1. Controller WDPHCL
2. NFIL Filter
3. Proximity switch SEPR
4. Probe pH EPHS
5. Chlorine probe either:  
> ECL6 (as pictured) or  
> ECL3S/10

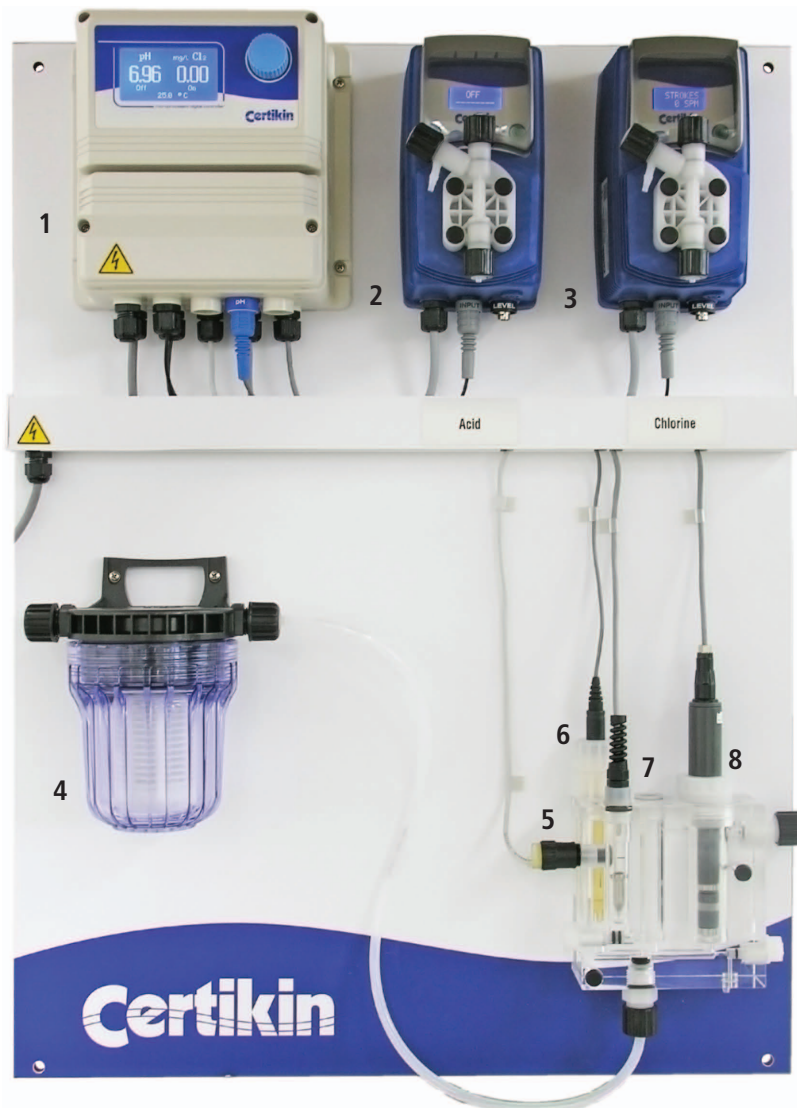
See page 13 for more information on chlorine probes.

Dimensions: 500x700 mm

# Control and dosing

## FOR COMMERCIAL APPLICATIONS

### CDE-PA- LDPHCLVD



**For pH and chlorine proportional control.  
Medium size swimming pools.**

1. Controller LDPHCL
2. Dosing Pump acid VMS MF 03 10 (10 l/h)
3. Dosing Pump chlorine VMS MF 02 17 (17 l/h)
4. NFIL Filter
5. Proximity sensor SEPR
6. Probe pH EPHS
7. Temperature probe ETEPT
8. Chlorine Probe - either:
  - > ECL6
  - > ECL3S/10

See page 13 for more information on chlorine probes.

Dimensions: 600x800 mm

# Control and dosing

## FOR HEAVY COMMERCIAL APPLICATIONS

### CDE-PA-M5DB

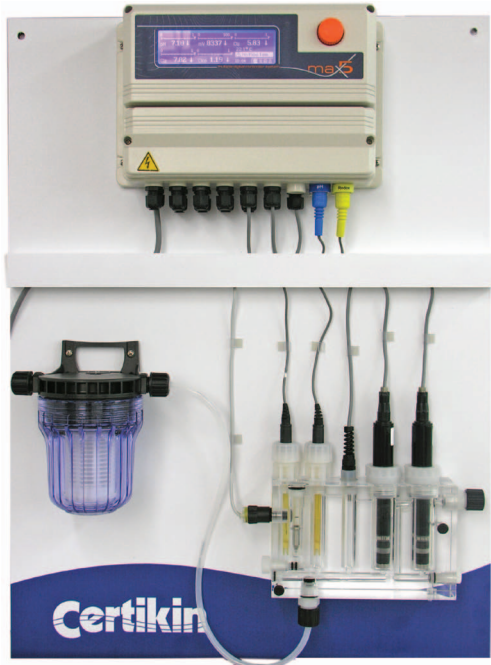


**For pH, ORP, Free chlorine, Total Chlorine, Combined chlorine, Temperature, Flocculant and Algicide.**

- |  |                                  |
|--|----------------------------------|
| 1. Multiparameters controller MAX5 (pH, Cl, Clt, T°) | 8. Probe Redox ERHS              |
| 2. Dosing Pump acid VMS MF 03 10                     | 9. Temperature probe ETEPT       |
| 3. Dosing Pump chlorine VMS MF 02 17                 | 10. Probe free chlorine ECL3S/10 |
| 4. Dosing Pump flocculant VCLG                       | 11. Probe chlorine ECL8/10       |
| 5. Dosing Pump algicide VMS EN 07 06                 | 12. Proximity sensor SEPR        |
| 6. NFIL Filter                                       | 13. Probes holder PEF22          |
| 7. Probe pH EPHS                                     |                                  |

Dimensions: 1000x800 mm

# Commercial systems



## Control board

1. Controller(s) from our range
2. NFIL Filter
3. Probes and probe holder from our range

All panel mounted to suit your specification.



## Pump board

Panel mounted board. Dosing pumps selected from wall mount range. Board shown includes multifunction valves which offer:

1. Pressure Relief
2. Pressure Sustaining
3. Syphon/Bleed



## Tank Set

Foot mounted dosing pump and electronic agitator mounted on chemical dosing tank which can be banded to prevent chemical spillage.

Various dosing tank and bund sizes available.



# Worldwide Control System

## LAN - GPRS/GSM - WEBSERVER WITH HOSTING SERVICE

### "ERMES" - COMMUNICATION SOFTWARE

Upto 30 controllers can be linked in a localised network using a RS485 protocol. Using ERMES software, you can monitor and manipulate each controller remotely.

#### WAYS TO CONNECT

##### LOCAL control

All controllers, par the CDE-LD multichannel controllers can be fitted with a USB port for direct connection to the PC.

CDE-LD multichannel controllers can be connected using a RS485-USB converter.

For local control please select USB Basic. To allow data download directly from the controller to a USB memory stick, please choose USB advanced

##### ETHERNET control

Controller is fitted with an internal network point (Cat5e). Users can connect to the controller through a local network and the internet.

##### REMOTE control

Controller is fitted with an internal GPRS modem. Using a compatible mobile SIM card (sold separatley) it can be used to connect to the controller remotely over the internet.

ERMES is capable of sending SMS alerts to upto 4 pre-programmed numbers or upto 4 email addresses for alarms. Users can also text the controller to receive up to date readings from the controller

A summary of the available options is shown in the table below:

	RS485 comm	USB* comm	ETHERNET module	MODEM module	USB 2.0 module DATA LOG
<b>BASIC configuration</b>	•	•			
<b>ADVANCED USB configuration</b>	•	•			•
<b>ETHERNET configuration</b>	•	•	•		
<b>GSM/GPRS configuration</b>	•	•		•	

\* Not available on LD Multichannel Series.

#### Points to consider before ordering:

- It is possible to retrofit communication modules to existing controllers.
- Modules can be installed internally or externally to suit
- Use of GSM/GPRS modem is dependant on mobile data signal. An external modem maybe required where signal strength is low.
- Ethernet connection requires direct, wired, connection to a local network. A system administrator will be required to configure firewall access etc.
- It is possible to piggy back multiple controllers -- i.e. controllers wired, via RS485, into a controller with a GSM modem may also be connected to over the internet



# Worldwide Control System

## LAN - GPRS/GSM - WEBSERVER WITH HOSTING SERVICE

### FEATURES

Standard configurations features are described in the table below:

	RS485 net <sup>(1)</sup>	USB comm service <sup>(2)</sup>	EMAIL alert service <sup>(3)</sup>	HTTP remote service <sup>(4)</sup>	SMS alert service <sup>(5)</sup>	USB data log <sup>(6)</sup>
<b>BASIC configuration</b>	•	•				
<b>ADVANCED USB configuration</b>	•	•				•
<b>ETHERNET configuration</b>	•	•	•	•		
<b>GSM/GPRS configuration</b>	•	•	•	•	•	

- (1) RS485 net: RS485 port for connecting instruments to network or to a PC using a converter
- (2) USB comm service: direct PC/instrument link using USB
- (3) EMAIL alert service: email multi-level alert messages using standard pop protocol
- (4) HTTP remote service: instruments configuration using a standard browser
- (5) SMS alert service: SMS multi-level alert messages using standard Short Message Service protocol
- (6) USB data log: instrument data activity recorded on standard USB pen-drive

ERMES softward allows users to control and program controllers in many different ways:

#### Connection using a RS485 network and USB or RS485 cable.

This connection enables the user to control one or more instruments directly connected to a PC.

#### Connection using a RS485 network and GSM modem or RS485 cable.

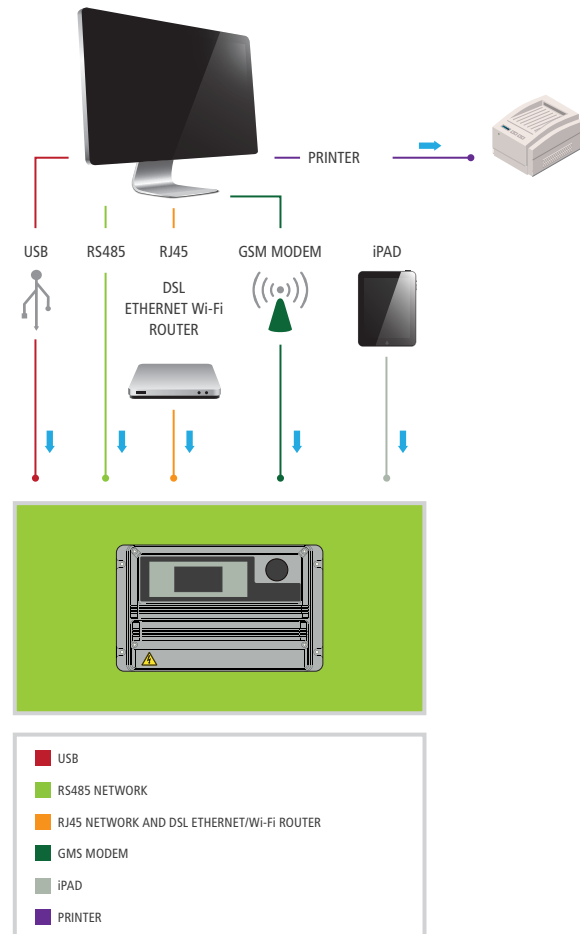
This connection enables the user to control one or more instruments from anywhere in the world via a standard Internet connection and a data SIM card.

#### Connection using a RS485 network and ETHERNET router.

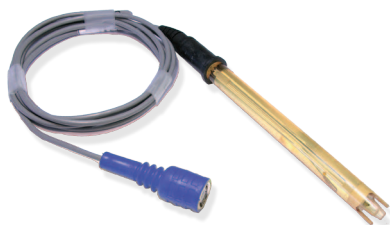
This connection enables the user to control one or more instruments within a LAN (Local Area Network).

#### Connection using a RS485 network and WIFI router.

This connection enables the user to control one or more instruments using wireless technology as on notebooks.



# Accessories



## CDE-EPHS

pH electrode for pressures up to 7bar/  
70°C (3.5bar/80°C).  
0.8m cable. Epoxy body.  
Minimum 100µS.



## CDE-ERHS

ORP electrode for pressures up to  
7bar/70°C (3.5bar/80°C).  
0.8m cable. Epoxy body.  
Minimum 100µS.



## BUFFER SOLUTIONS

Buffer solutions for probe calibration.



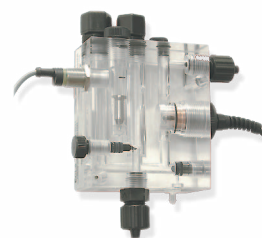
## CDE-ECL8

Total chlorine amperometric cell (organic and inorganic),  
from 0 to 2 mg/l ; from 0 to 20 mg/l, pH and temperature  
compensated.



## CDE-ECL3S/10

Free chlorine amperometric cell (organic and inorganic),  
from 0 to 10 mg/l, pH and temperature compensated.



## CDE-ECL6 - ECL12

Free chlorine / bromine amperometric cell  
(organic and inorganic), from 0 to 10 mg/l.  
Flow switch and flow adjustment.  
Electrode holder for pH, Redox and temperature.  
With proximity switch mod. SEPR. 6x8 fittings.



## CDE-ETEPT

Temperature probe (0°C÷100 °C, max 10bar).

# Accessories



## CDE-NFIL CA

5" filter with carbon activated filter cartridge. 6x8 fittings.



## CDE-NFIL

Filter with cartridge. Washable. PET (60 µ). 6x8 fittings.



## CDE-NPED4

Off-line electrode holder for EPH, ERH electrodes. Temperature max 50° C, max pressure 5bar with flow sensor with N.O. contact. 6x8 fittings.



## CDE-PEF22

Free, total chlorine, pH, ORP and Temperature probes holder with flow switch and flow adjustment. 6x8 fittings. Best for MAX5 digital controller.



## CDE-PEF1

Off-line electrode holder for ECL1/2/3/8/9/10/11 and pH, Redox and temperature, with flow switch and flow regulation. With proximity switch mod. SEPR. 6X8 fittings.



## CDE-EVLA

Solenoid valve for dry feeder. 1/2" fitting.



## CDE-PELC

PVDF in-line electrode holder for pH / Redox electrodes with 1/2" or 3/4" thread. For saddle connection.



## CDE-PEL

PVDF in-line electrode holder for pH / Redox electrodes with 1/2" or 3/4" thread. For "T" connection.

# Accessories



## CDE-MIXV/8

High speed mixer  
1400 RPM.  
AISI shaft-PVC coated,  
length available: 630  
mm.  
Marine impeller,  
diameter 70 mm.



## CDE-MIX/8

Low speed mixer  
65/200/400 RPM.  
AISI shaft-PVC coated,  
different lengths  
available  
(630-730-980 mm).  
3-blade impeller,  
diameter 150 mm.



## CDE-MIX/MAN

Manual mixer.  
PVC shaft,  
length available: 390 mm.  
Impeller diameter 90 mm.



## CDE-LASP/x

Suction lances  
with level control,  
for tanks up to  
25 litres (suitable for  
carboys).



## CDE-LASP1/x

Suction lances  
with level control,  
for tanks up to  
1000 litres.



## CDE-LINIR

1/2" injection lance for dosing sodium  
hypochlorite in hard water. PVDF body.  
Viton® or EPDM o-ring. Ball valve.



## CHEMICAL TANKS & SAFETY BUNDS

Polyethylene, anti-UV for chemicals. Complete chemical  
tanks with safety bunds.



## INJECTION VALVE 1/2"

Injection valve (PVDF).



## LEVEL PROBE

Level probe with foot filter and BNC  
connector (full natural PVDF).



## MF MULTIFUNCTIONS VALVE

Multifunction valve (pressure, safety,  
antisiphon and bleed) 1/2" connections  
for different hose diameters. Pressure  
range adjustable from 1 to 5 bar for  
pressure valve operating mode, from  
1 to 18 bar for safety valve operating  
mode. Discharge connection  
3/8" 4x6. Viton® or EPDM o-ring.  
PVDF body.

# Notes







Certikin Ltd • Witan Park • Avenue Two • Station  
Lane Industrial Estate • Witney • Oxon • OX28  
4FJ • Reg. in England No. 3047290  
E-mail: [enquiries@certikin.co.uk](mailto:enquiries@certikin.co.uk)

Certikin France. - ZI de Torremilla - 219 Rue Henry  
POTÉZ - 66000 PERPIGNAN Tél : 04 68 52 64 30  
Fax: 04 68 52 64 30 - [sentex@sentex-france.com](mailto:sentex@sentex-france.com)

Certikin Pool Ibérica S.L.U. P.I. Mas Puigvert-Oest  
19-20 Parc.3 - 08389 Palafolls (BARCELONA) Tel:  
902 02 03 42 Fax: 93 764 53 97

Certikin Italia SpA - Via Gavardina 96/98/100  
25010 Ponte S.Marco (BS) Italia - Tel. +39  
030 9980088 Fax +39 030 9637619 - P.I.  
00813790987 - Reg. Imp. di Brescia 00813790987  
- Capitale Sociale 300.000,00 int. vers.

Certikin India  
7a Dyavasandra Industrial Estate  
3rd Cross  
Singayanapalya  
Bangalore India 560048  
T + 91 80 4094 3024  
F + 91 80 4094 3025

Certikin Middle East  
Jebel Ali Free zone  
Dubai  
T+ 971 4 8861404  
F + 971 4 8861004