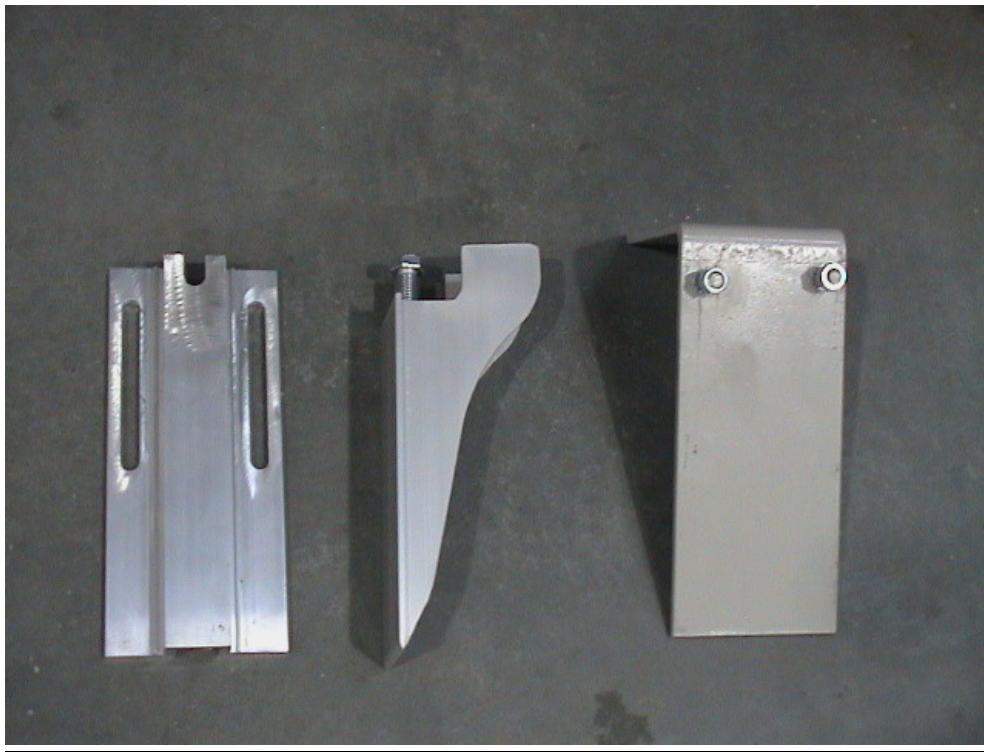


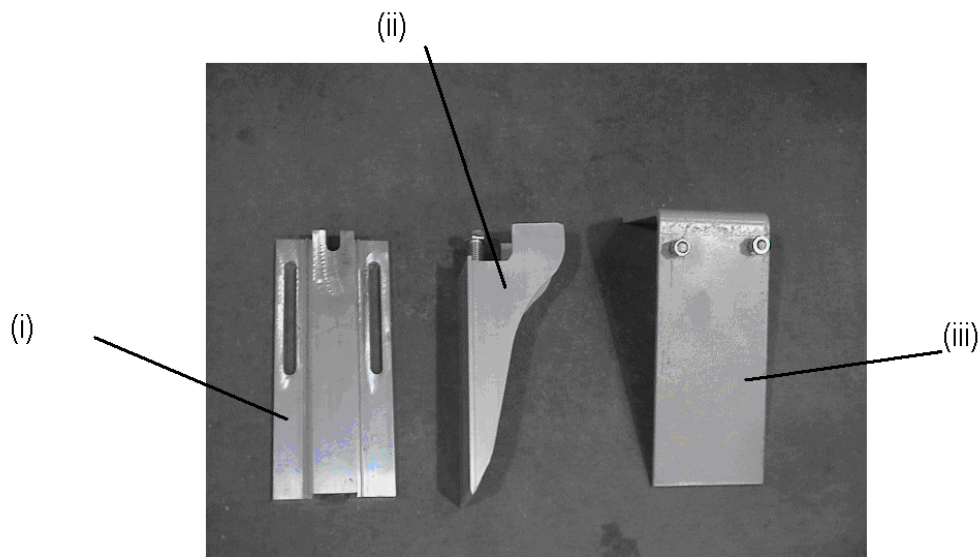


INSTALLATION
INSTRUCTIONS FOR PIT BRACKETS
ONLY



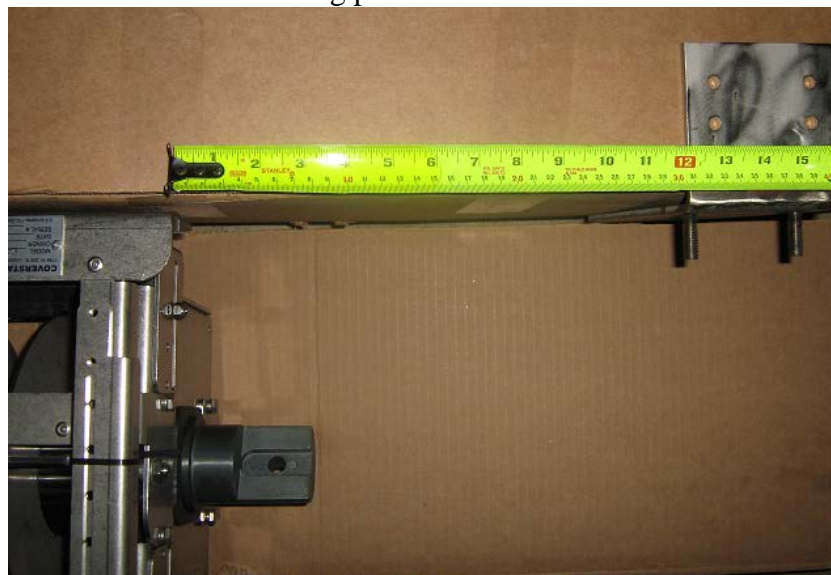
Assembling the Pit Brackets – Aluminium Lid

1. The pit Brackets consists of three sections,
 - (i) Adjustable Base
 - (ii) Arm Bracket
 - (iii) Fixed mounting plate (L shape bracket)



The Pit brackets are installed to the back wall of the pit.

2. It is essential that the pit brackets are spaced correctly, so that they do not interfere with the mechanism. Therefore measure approximately 1' (304.8mm) from the mechanism on either end and secure the fixed mounting plate bracket at this distance.



3. Place the fixed mounting plate to the back of the pit. Secure the fixed mounting plate to the back of the pit wall by using the four pre drilled holes and fasten.



4. Mount the adjustable base to the fixed mounting plate using the pre cut slots, This allows you to adjust the height accordingly. Fasten the adjustable base using the nuts and star washers provided.



5. Once the adjustable base is at the correct height and secured, the arm bracket can now be mounted onto the adjustable base using the pre-cut hole provided. The arm bracket can also be angled to suit the lid. To raise the arm bracket at an angle simply tighten the bolt (attached to the arm bracket).



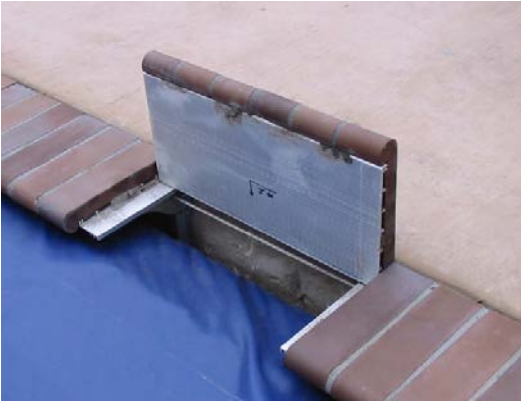
Assembling The Pit Brackets For Heavy Duty Trays

1. If the heavy duty trays have been selected, please leave the installation of the pit brackets to the very end. This is to ensure that the brackets have the correct amount of spacing for the Heavy Duty trays and most importantly match correctly with the rest of your pool surround. To install the lid brackets please follow the steps 2-5 mentioned above for the aluminium pit lid brackets.

It is up to the pool dealer to install the Pit brackets and the Heavy Duty Trays.
You may also need to cut the trays to suit your cover pit accordingly.



To ensure the trays are supported, mount one half of the tray onto one half of the bracket.
Please see images below.



OPTIONAL ITEMS

1. WALK ON BRACKETS

The walk on brackets are designed to mount to the side walls of the pit, thus creating a shelf to support the heavy duty trays (to cover the mechanisms). Two x 5" (127mm) brackets (non mechanism end) and two x 10" (254mm) brackets (mechanism end) will be supplied



