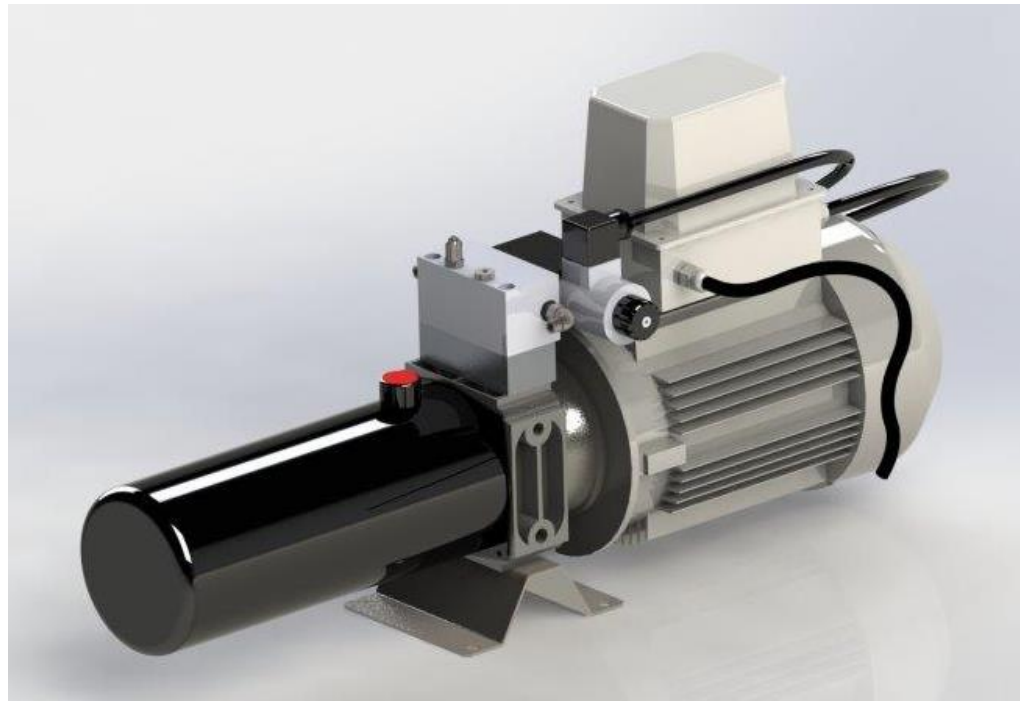




Hydraulic Installation Manual for Power Unit 9099 CTA1533J





Installation and commissioning of this power unit should only be carried out by a competent engineer.

As a minimum but not limited to, ensure the full use of protective eyewear and gloves prior to starting any installation and commissioning

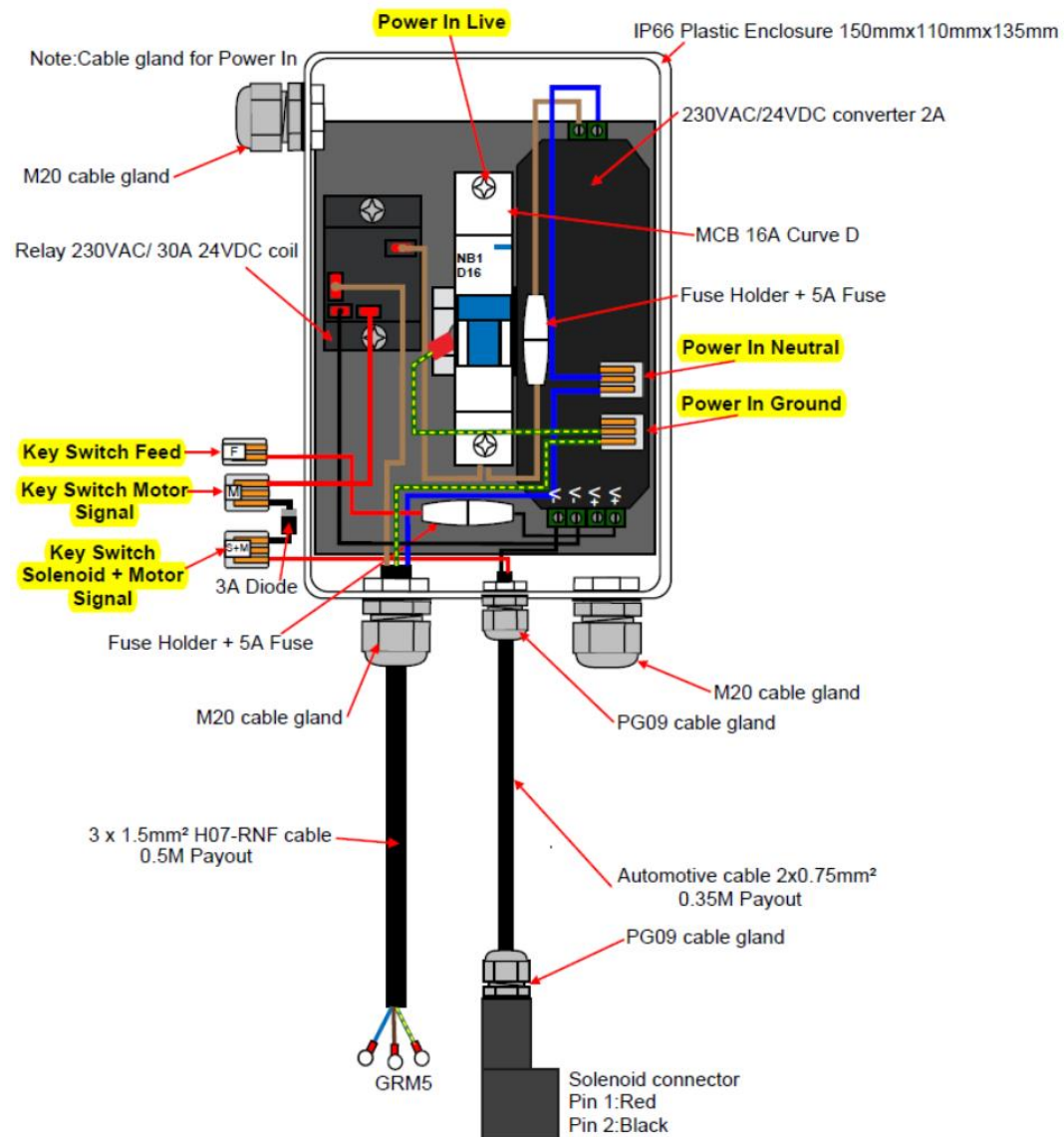
► Ensure you have the following:

- A flat, level and clean mounting surface
- Suitable fixings (4 x M8) to fix the power unit mounting plate to the surface
- The approved hydraulic oil as supplied with the power unit (Certikin COV140J)
- 1 x 4mm hexagon key
- 1 x 13mm, 1 x 14mm, 1 x 18mm & 2 x 19mm AF spanners
- 1 x 9/16 JIC male-male adaptor and 1 x 9/16 JIC female cap
- Oil filling funnel with 60 micron or better screen
- **Clean** and **Clear** hoses from the pool cover hydraulic motor end

► The following is the electric motors rating plate

1~ Mot	TYPE: 2.241PCB3 MY 100L1-4					SN No. 1503-0572406		
S1-100%		IEC60034		IP 55	Ins.Cl. F	IM B3		
DE 6206 ZZ				NDE 6206 ZZ		N.W.: 23.9 KG		
V	Hz	min ⁻¹	kW	A	cos ρ	Capacitor		
230	50	1390	2.2	12.6	0.97	70 μ F	450 V	

- The electrical connection box for the power supply and key switch is mounted directly to the power pack. Full details of the wiring can be found on page 3

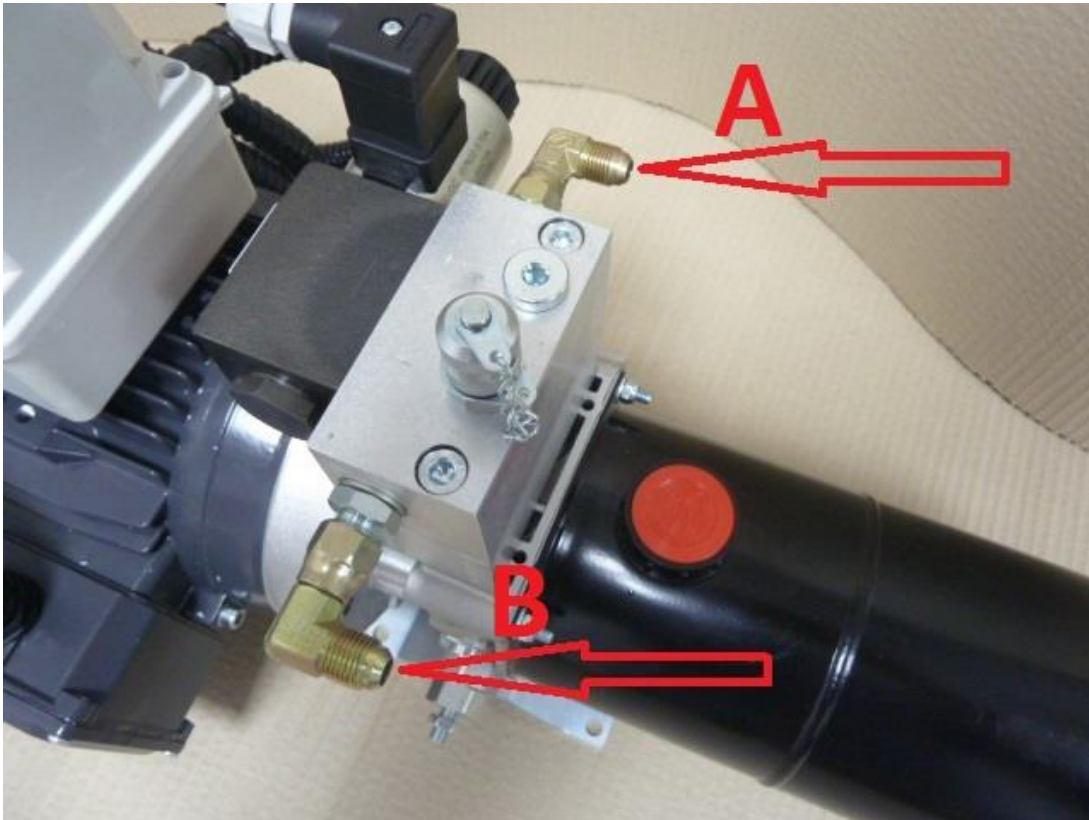


► Control Junction Box and Electrical Wiring Information

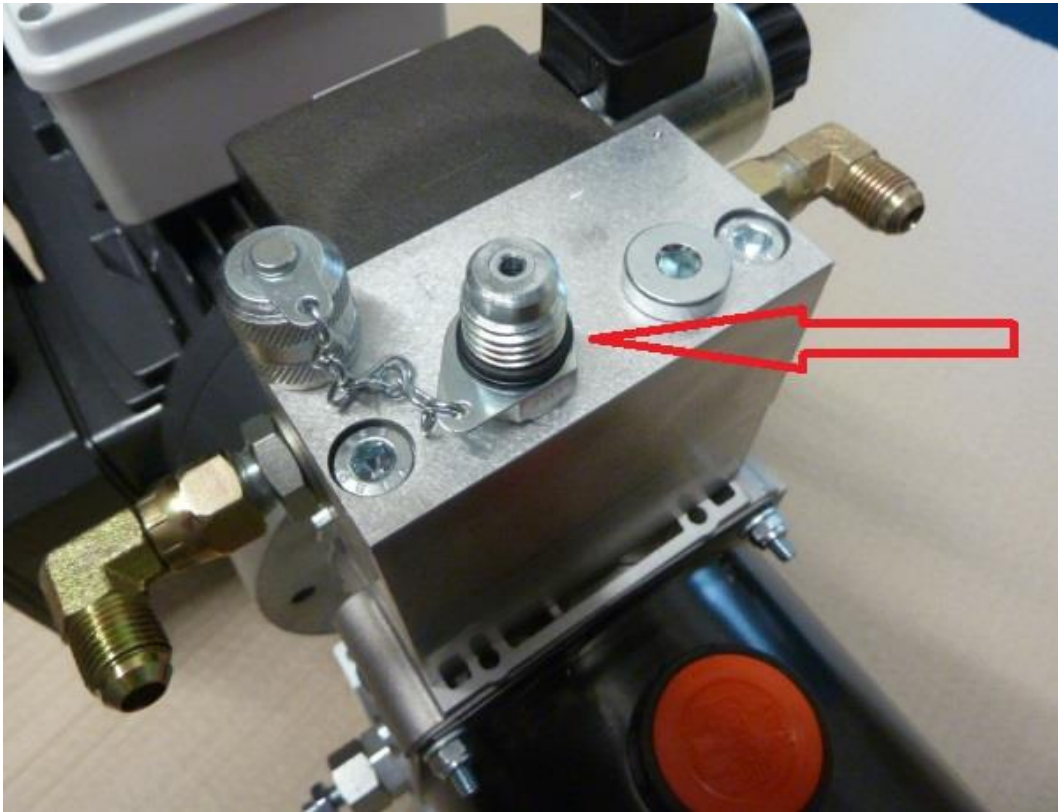
- Power in and key switch connection points highlighted yellow

Step 1:

Connect a **clean** hydraulic hose to fitting B as indicated below and fit the 9/16 JIC cap to fitting A as indicated below

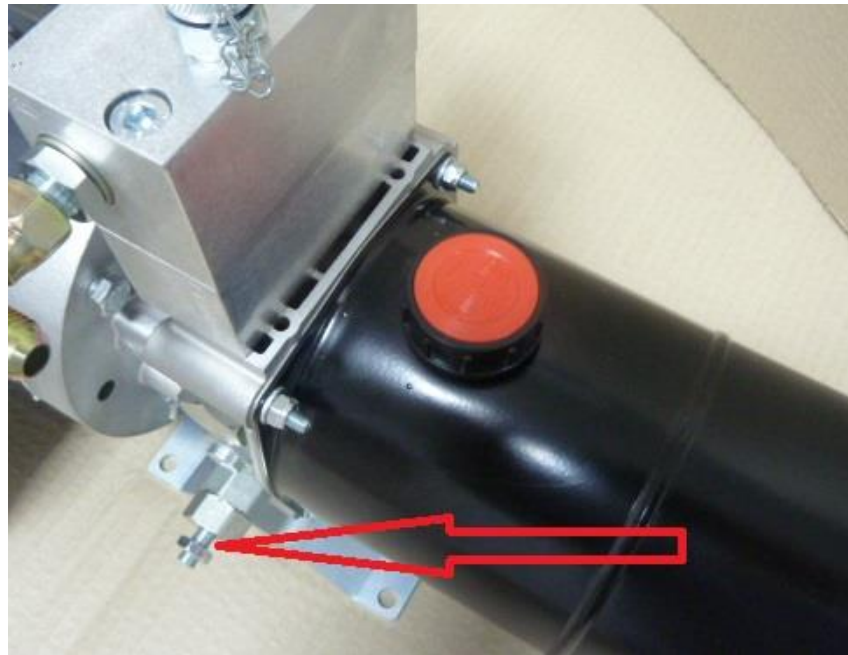


Step 2:
Connect test point kit and pressure gauge to
fitting as indicated below



Step 3:

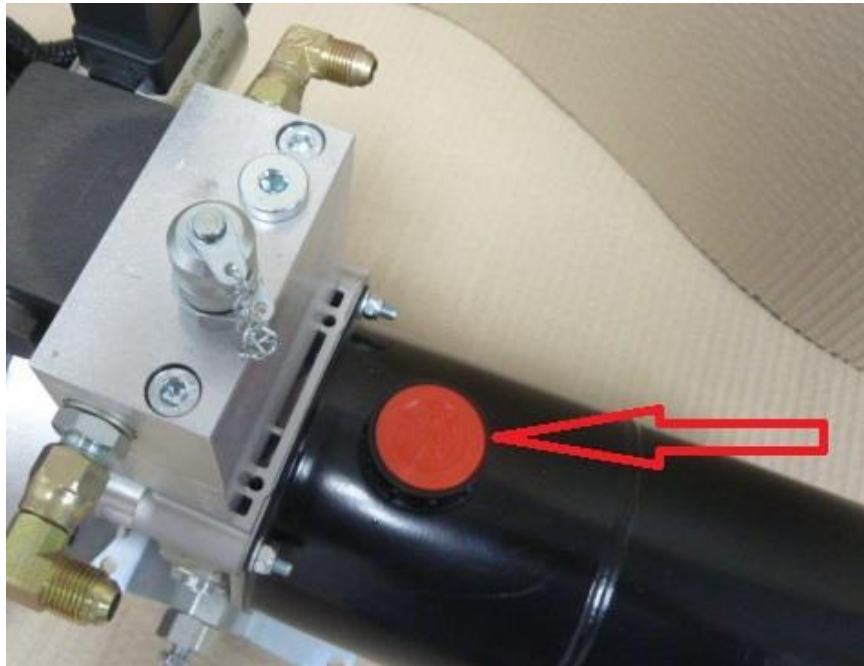
Loosen nut of relief valve and turn centre hexagon screw anti-clockwise until it feels loose. Now turn screw clockwise until it just starts to see light resistance, after this point give it one full turn clockwise



Step 4:

Remove the red filler plug from tank and fill to approx. 1-2cm from the top. Depending on the length of the hoses you will need to top this up. Approx. $\frac{1}{2}$ litre per 7M of hose.

Do Not Let The Pump Run Dry!



Purging of the Air and Connecting the Hoses

- ▶ Connect the opposite ends of the hoses together using the 9/16 JIC male-male adaptor.
- ▶ Hold the end of the hose that would be attached to fitting A on the power unit (see page 4) into a clean container and start the pack (see fig A) using the pool cover switch in the to open cover direction.
- ▶ Air should start to purge from the hose and the oil will reduce in the tank, if this is not the case then the wires in the switch box need reversing.
- ▶ Top up the oil as required and repeat the operation until oil runs clear into the container.
- ▶ Remove the 9/16 JIC cap from fitting A and connect the hose.
- ▶ Connect the other ends of the hoses to the hydraulic motor on the pool cover ensuring that the hose attached to fitting B (see page 4) is connected to the open cover port of the hydraulic motor.
- ▶ Once all hoses have been connected check the oil level in the tank and top up if necessary and replace filler plug (see page 7)

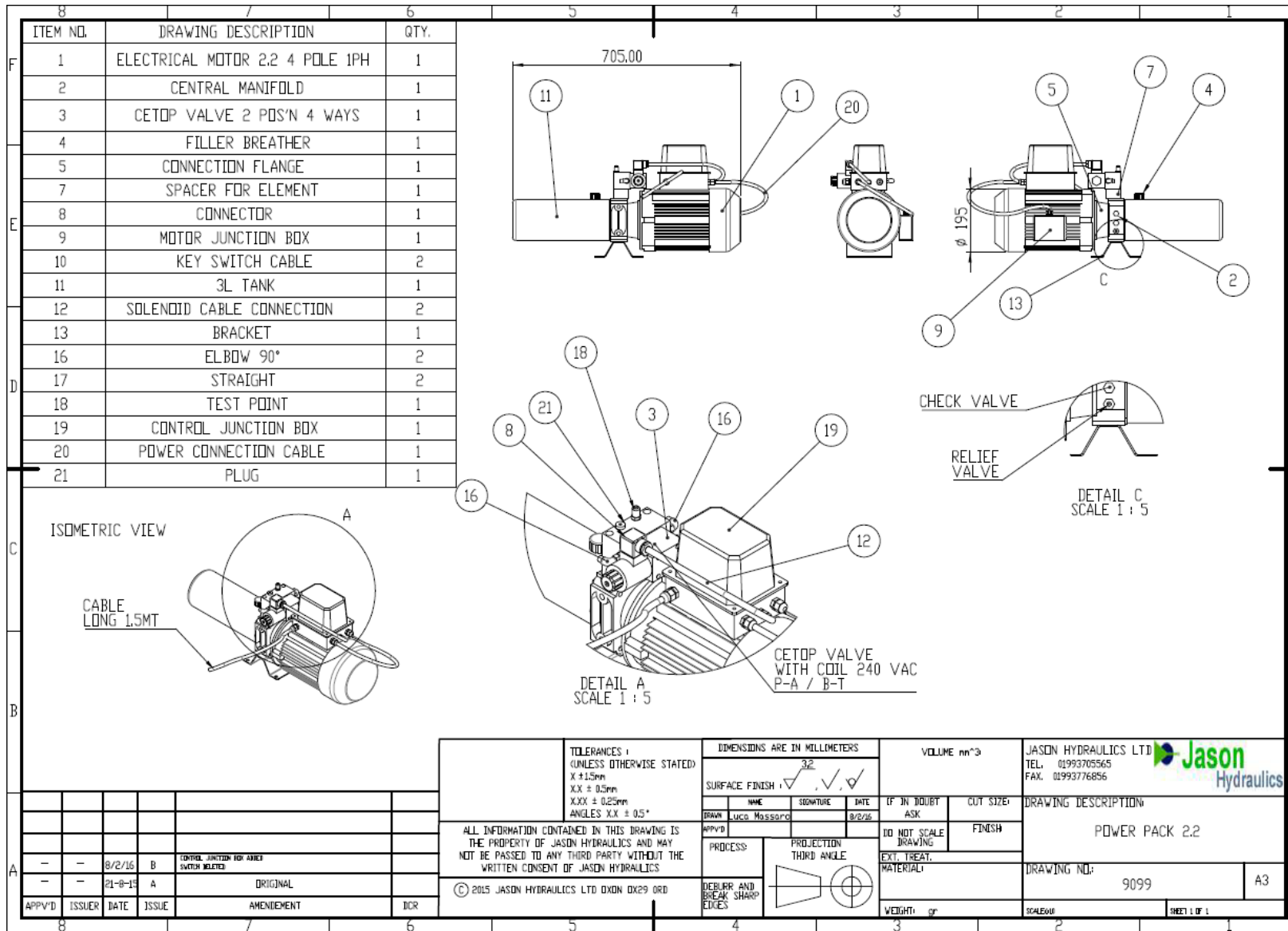
Fig A



Setting the pressure of the Power Unit

- ▶ To set up the power units hydraulic pressure, operate the pool cover switch in the **COVER** direction and turn the hexagon screw clockwise, in ½ turn increments (see page 6) until the cover runs smoothly, then one last ½ turn of the hexagon screw to complete the set up. To fix this screw in position, tighten the locknut.
- ▶ The cover should always be setup in the **COVER** direction as this requires a higher pressure from the power unit than the in the uncover direction. Check the pressure on the test gauge for recording purposes, replace the test point cap (see page 5).
- ▶ Note: The maximum pressure on the test gauge should not exceed 70 bar

Power Unit Parts Information



Power Unit Circuit Information

